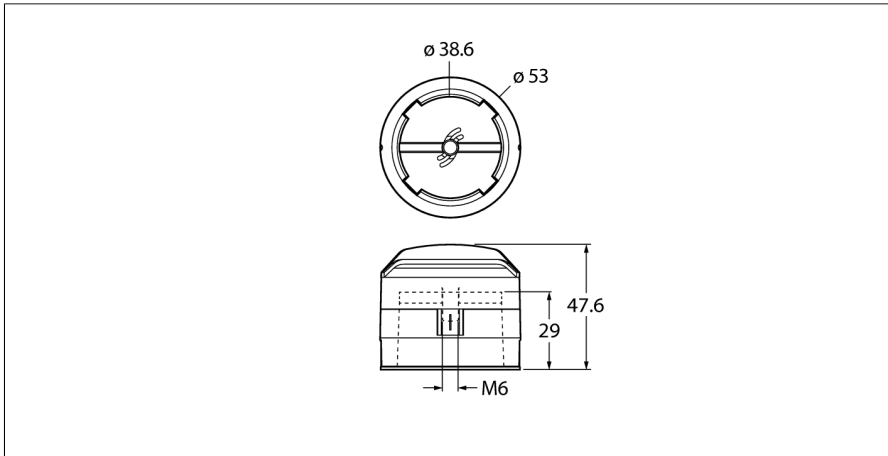


Accessories

Actuator (puck)

BTS-DSC26-EB20

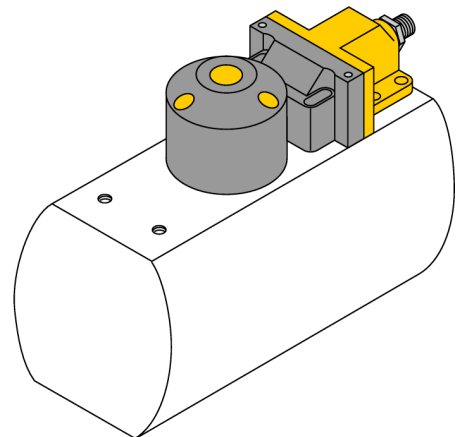


- End position damped
- Displays rotatable by 90 °
- Hole pattern on flange: 80 x 30 mm
- Connection shaft (shaft extension) height: 30 mm/Ø: max. 38 mm
- Available as an option: Spacer BTS-DSC26-UR10 for 20-mm-high connection shafts (shaft extension)

General description

Dual sensors are especially designed for position detection in rotary actuators. They combine the reliability of non-contact inductive sensors with the flexibility of a modular housing system. A broad range of practice-oriented accessories ensure optimal adaption to your system.

Type	BTS-DSC26-EB20
ID	100002102
Design	Accessories for dual sensor, Ni4-DSC26-..., Ni4-DSU26...
Housing material	Plastic, PA6
Tightening torque fixing screw	1.5 Nm
Included in delivery	1 pcs. countersunk screws: M6 x 16, DIN 7991-A2



Accessories

Type code	Ident no.		Dimension drawing
BTS-DSC26-UR10	100002103	Spacer for dual sensor actuation kitBTS-DSC26-EB20	<p>The drawing shows a technical representation of a spacer component. It includes a side view on the left and a top-down view on the right. The side view shows a cylindrical part with a diameter of 6.4 mm and a total length of 13.7 mm. The top-down view shows a circular shape with a diameter of 37.5 mm and a central hole with a diameter of 6.4 mm. Other dimensions shown include 3.8 mm for the top flange, 10 mm for the main body length, 4.1 mm for the bottom flange, and 15 mm for the distance from the center to the bottom edge. There are also dimensions of 1 mm and 6 mm for the bottom flange's thickness and width respectively.</p>